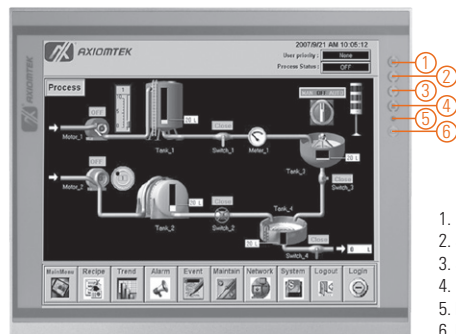


P6151-V3 NEW

15" XGA TFT Industrial LCD Monitor

Features

- 15" XGA TFT 420 nits LCD
- Resistive touch
- NEMA 4/12 (IP65) compliant front bezel
- Full range screw-type (locked) AC-in or 24 VDC in (optional)
- HDMI, DP and VGA with multi-signal inputs
- Supports panel mount, wall mount and VESA mount
- Built-in speakers



▲ Ultra-slim mechanism design

Introduction

The P6151-V3 is an ultra slim industrial LCD monitor, which adopts 15-inch 420 nits XGA LED backlight LCD display and supports multi-signal interfaces including DP, VGA and HDMI. Featuring, screw-type adaptor plug design, and 12V/24V DC-in means it is fit for all kinds of industrial environments. With the compact mechanism design, users can enjoy free from space constraint. It is especially suitable for POI/POS, excellent HMI and all kinds of heavy-duty industrial fields.

Specifications

Front Bezel	NEMA 4/12 (IP65)-compliant, metal front bezel
Mounting	Panel mount, wall mount or VESA arm FPMPLM mounting (video electronics standards association Flat Panel monitor physical mounting interface)
LCD Panel	Display 15" XGA TFT LCD
	Max. Resolution 1024 x 768
	Max. Colors 16.2M
	Active Area (mm) 304.128 x 228.096
	Pixel Pitch (mm) 0.297 x 0.297
	Response Time 16ms
	Backlight LED backlight
	Backlight MTBF 30,000 hrs
	Viewing Angle (H/V) 160°/160°
Contrast Ratio 800 (TYP.)	
Brightness (cd/m ²) 420 nits	
Display Control	OSD (on screen display)
Input Signal	DP
	VGA
	HDMI
	Touchscreen: USB interface

